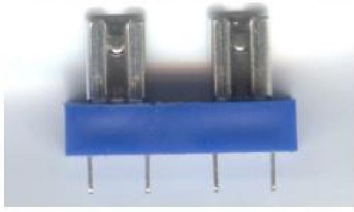


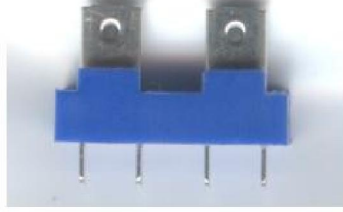


**SL021**

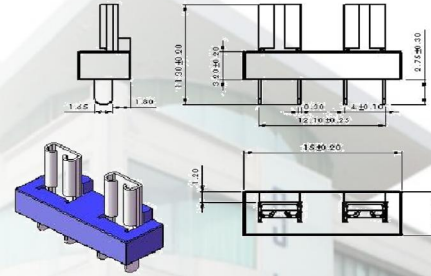
**MINI AUTO FUSE BLADE HOLDERS**



(SL021/ FRONT)



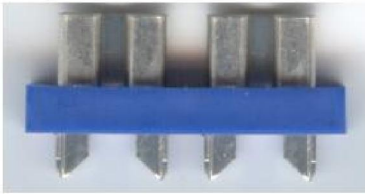
(SL021/ BACK)



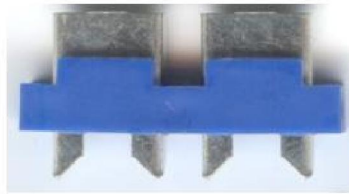
**FOR MINI AUTO FUSE WITH PCB BOARD USE**

**SL022**

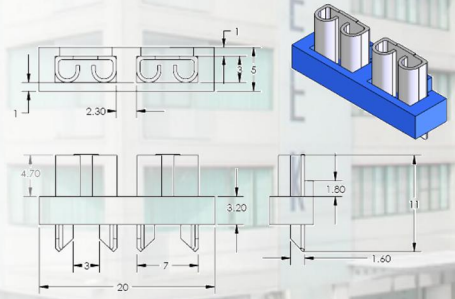
**AUTO FUSE BLADE HOLDERS**



(SL022/ FRONT)



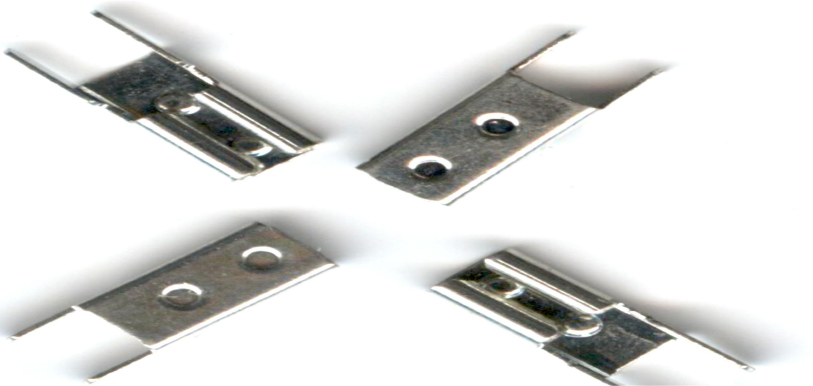
(SL022/ BACK)



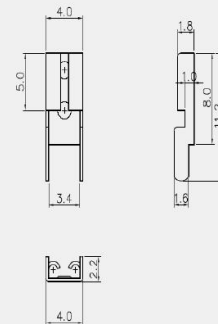
**FOR AUTO FUSE WITH PCB BOARD USE**

**SL023**

**MINI AUTO FUSE CLIP**



MINI AUTO FUSE CLIP

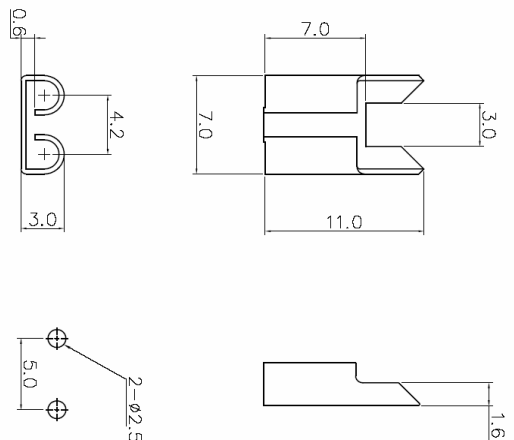


SPECIFICATION:

- A= MINI AUTO FUSE CLIP
- B=MATERIAL: Spring Brass  
Thickness: 0.3t
- C= 32 V DC 15A Max
- D=Bright Tin-Plated
- E=P.C. Board Type With Fuse Stops

**SL024**

**AUTO FUSE CLIP**





**SLEETECH ENTERPRISE INC.**

**呈乙企業股份有限公司(SLEEK FUSE)**

台灣 413 台中縣霧峰鄉中投東路一段 350 號  
350, Sec.1, Zhongtuo E. Rd., Wufeng, Taichung, 413 TW  
TEL:886-4-23332889 FAX:886-4-23396283  
Email: [export1@sleek.com.tw](mailto:export1@sleek.com.tw) or [tw5@sleek.com.tw](mailto:tw5@sleek.com.tw)

**SL025**

**IN-LINE AUTO FUSE HOLDER**

